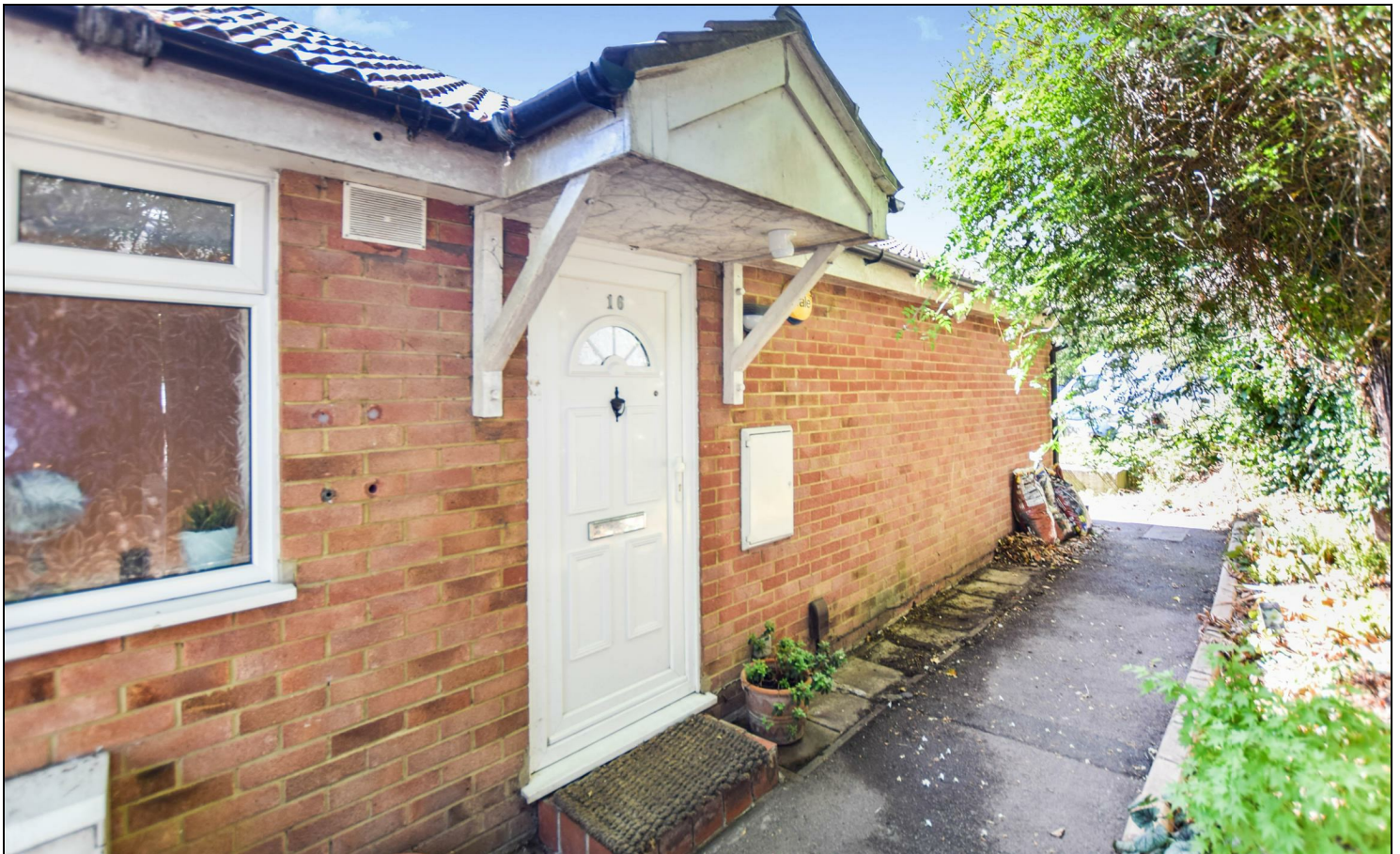


Myrna Close Colliers Wood, SW19 2HW

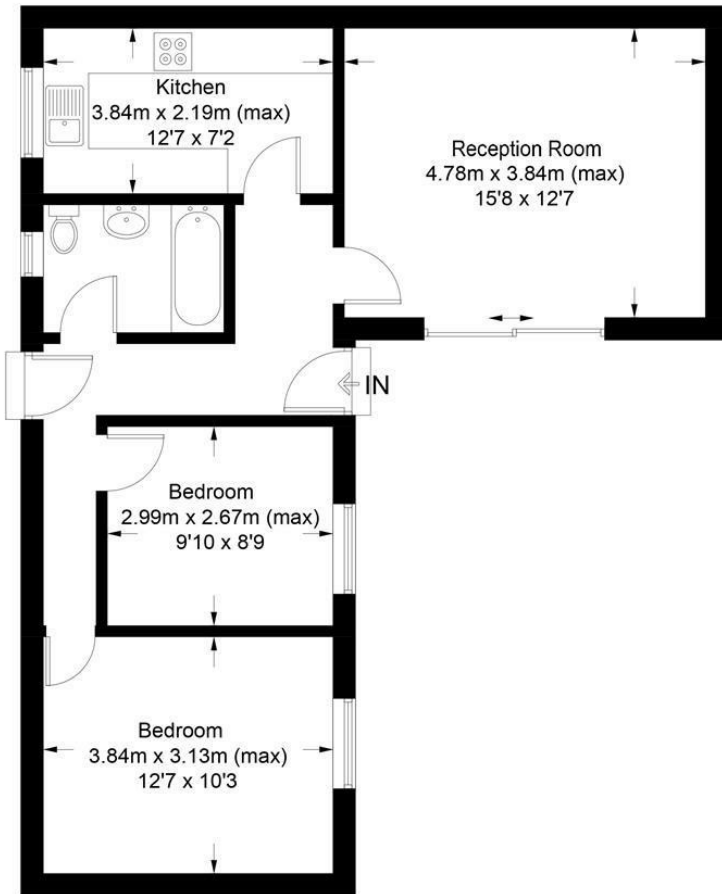
£450,000 Freehold



A beautifully presented Two Double Bedroom freehold Bungalow located on a quiet cul-de-sac ideally located just moments from both the local shops and Collier's Wood Tube Station. Comprising of a modern fitted kitchen, spacious lounge/diner with air conditioning and direct access onto a private courtyard style rear garden, there are two double bedrooms to which the master has air conditioning, family bathroom and gated off street parking.

Myrna Close, SW19

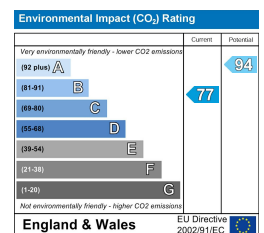
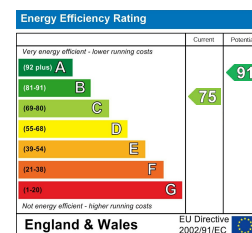
Approximate Gross Internal Area = 59.1 sq m / 636 sq ft



Ground Floor

This floor plan is for representation purposes only and is not drawn to scale.
The Gross Internal Area includes outbuildings shown on the plan.
 Whilst every attempt has been made to ensure the accuracy of the plan measurements of doors, windows and rooms are approximate only and should be checked before making any decisions reliant upon them.
 Copyright Bespokeplans.co.uk (ID651211)

- Bungalow
- Two Double Bedrooms
- Freehold
- Beautifully Presented
- Off Street Parking
- Private Garden



For Free Mortgage Quote and Best Mortgage Rates, call an Ellisons Mortgage Advisor on 020 8544 0518



Although these particulars are believed to be correct, their accuracy is not guaranteed and they do not form part of any contract.

Celebrating 30 years of successful Sales and Lettings in Merton

